

CMEC Suzhou currently has four branches and factories with a combined area of approximately 60,000 square meters and asset investments exceeding 80 million USD. Our factories in China and Vietnam focus on the production of high-end hand tools, such as pliers, snips and wrenches etc. The Mexico factory specializes in manufacturing industrial-grade trolleys, including tool boxes, tool carts, and workbenches etc. Meanwhile, our factory in Australia is dedicated to the production of rubber products, which complement our other products.

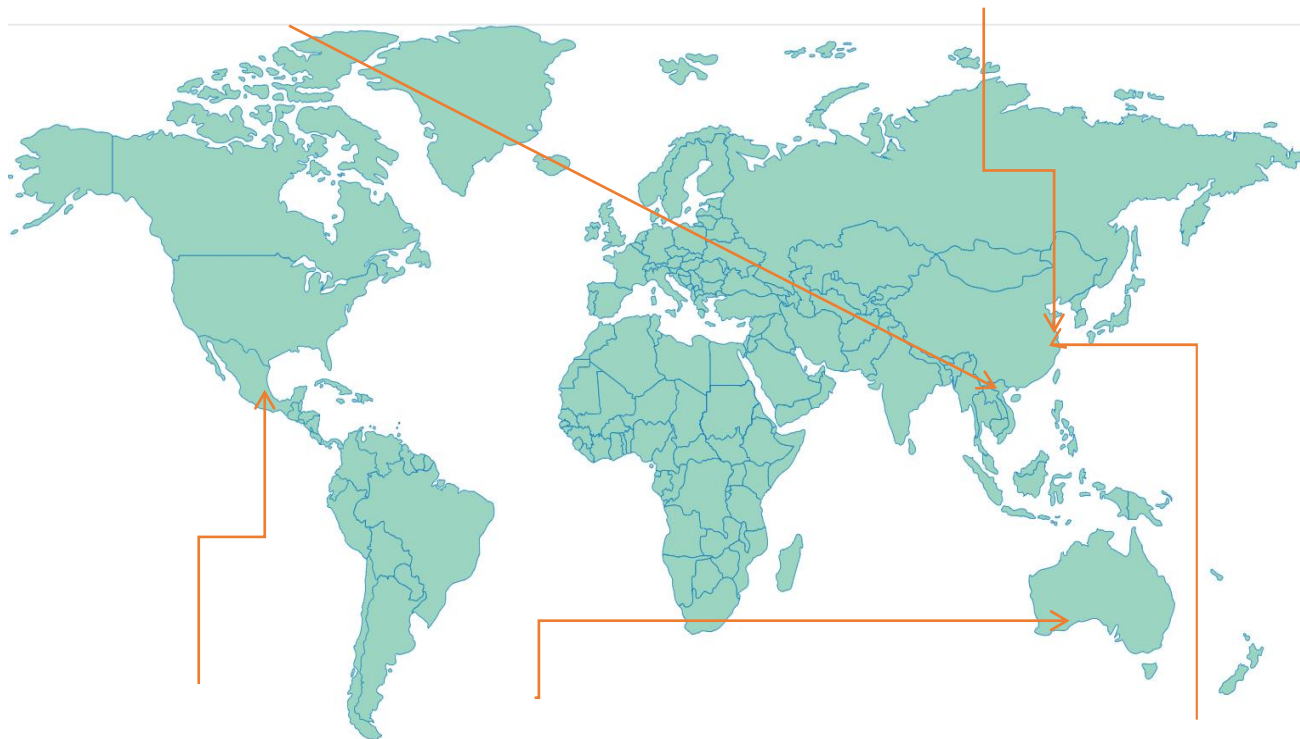
As an OEM manufacturer for leading tool brands in the US and EU, CMEC Suzhou has gradually evolved into an ODM and OBM manufacturer. We welcome the friends around the world to visit our factories and talk business.

Certification & Qualification



ThaiNguyen, Vietnam
Investment: 18million USD
Share: 51%
Factory area: 15000 m²
Products: Hand tools

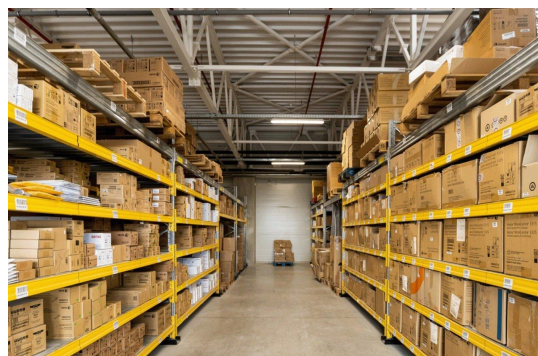
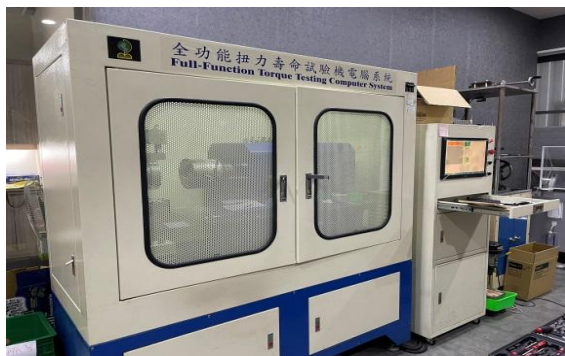
Zhangjiagang, China
Investment: 42million USD
Share: 100%
Factory area: 23000 m²
Products: Hand tools



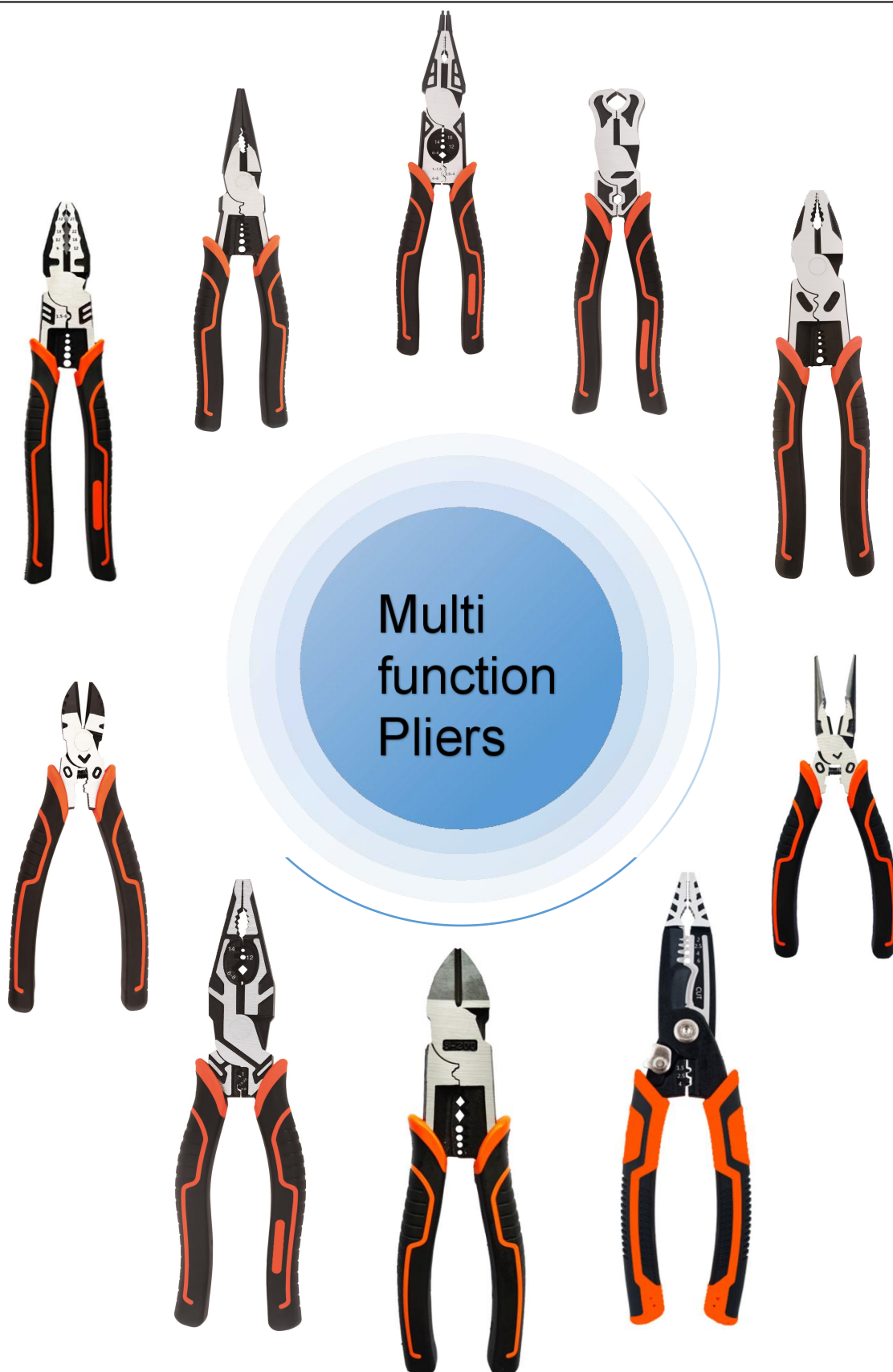
Queretaro, Mexico
Investment: 10million USD
Share: 51%
Factory area: 10000 m²
Products: Tool trolley

Rocklea, Australia
Investment: 9million USD
Share: 100%
Factory area: 12000 m²
Products: Rubber

Suzhou, China
Investment: 2million USD
Share: 100%
Factory area: 580 m²
Headquarter









国机集团
SINOMACH

Made in China



VDE



Circlip
pliers





Tin snips

Aviation snips

Groove
joint
pliers

Diagonal
cutting
pliers





国机集团
SINOMACH

Made in Vietnam





国机集团
SINOMACH

Made in Mexico



